



ELECOR™

Material Handling Products

NEW!
ADD ON
KIT
PAGE 7



TM

**CONTRACTOR
PRO-GRADE™**

Catalog

Terms and Conditions of Sale

DISTRIBUTOR TERMS AND CONDITIONS

GENERAL INFORMATION:

AGREEMENT:

These Terms and Conditions and the provisions hereof constitute the entire agreement between Elecor Mfg. and the buyer and supercede all statements, representations and agreements, oral or written made by the parties or their representatives including, without limitation, conflicting or different provisions of Buyer's purchase order. No modification or addition to this agreement shall be binding upon Elecor Mfg., unless specifically set forth in writing, signed by Elecor Mfg.

TERMS:

2% 10th prox., NET 25th of month. Invoices dated 1st through the 25th are due the 10th of the following month to qualify for the 2% cash discount. Invoices dated 26th through 31st, inclusive, are payable the 10th of the next following month to qualify for the 2% cash discount. After the 25th of the following month, a monthly service charge of 11/2% will be applied, unless that rate exceeds the maximum lawful rate, then the maximum lawful rate will be used.

PRICES:

Pricing is subject to change without prior notice. Orders will be invoiced at the pricing in effect at the time of shipment unless otherwise stated. Price quotations will be valid for thirty (30) days from the date of quotation unless expressly written otherwise by Elecor Mfg.

MINIMUM BILLING:

A minimum billing charge of \$100.00 net will be made on all orders. Next day express shipments are not subject to minimum billing requirements.

BROKEN CARTONS:

Orders for broken cartons will not be allowed. Orders will be increased to full carton quantities and invoiced accordingly.

DELIVERY:

Qualified shipments, within the continental U.S., will be made prepaid by surface freight, F.O.B. shipping point, to one destination. Freight on qualified shipments to destinations outside the Continental U.S. (including Alaska and Hawaii) will be prepaid and allowed to the U.S. port of export only. Elecor Mfg. reserves the right to use its own discretion in routing shipments for which Elecor Mfg. assumes transportation charges. If the purchaser specifies a more expensive routing, the purchaser must assume all transportation charges. Premium freight charges are the responsibility of the purchaser and are not subject to cash discount.

SHIPPING AND FREIGHT TERMS:

Orders valued less than \$1,000.00 Distributor Net Cost will be subject to actual transportation charges as invoiced by the carrier.

WEIGHTS AND DIMENSIONS:

Catalog weight and dimensions are approximate and subject to change without notice.

ORDER ACCEPTANCE:

All sales are expressly limited to these terms and conditions and the right and intentions of the parties shall be governed exclusively by terms and conditions hereof. Where there is any conflict as to whether the Seller's terms and conditions govern the contract, receipt and acceptance, whether under protest or otherwise, of the materials and supplies delivered hereunder shall be conclusive evidence of the acceptance by the purchaser of the contract on all the Seller's terms. Elecor Mfg. accepts orders and bills at current published prices and terms even though incorrect prices and terms may appear on the Purchaser's order.

CLAIMS:

Claims by purchaser for billing errors, shortages, damages, freight charges or allowances of any kind must be made within 30 days from receipt of material.

A. Shortages/Damages: Under FOB shipping point terms, title of the material passes to the distributor when Elecor Mfg. delivers the material to the carrier. It is the distributor's responsibility to resolve all shortage and damage claims directly with the carrier.

B. Payment Responsibility: Any claim against Elecor Mfg. does not alter the distributor's responsibility to pay invoices when due.

CANCELLATION:

Orders for Specials, or standard goods in quantities larger than normal inventory, may NOT be cancelled once the order is placed in production.

TAXES:

Published or quoted prices do not include sales taxes, excise, or similar taxes. Purchaser must pay all taxes.

SHIPPING DATE AND DELIVERY:

Every effort will be made to fill orders within the time stated. Under NO circumstances will seller be responsible for or the purchaser(s) entitled to consequential damages arising out of or owing to any delays in delivery whatever or for causes beyond seller's reasonable control.

Shipping date and delivery specified are subject to any priorities or allocations necessitated by government orders or regulations, and time and manner of delivery are subject to any delay on the part of the purchaser(s) in supplying necessary data, or by any changes in data at the purchaser(s) insistence, and/or to delays caused by fire, floods, strikes, lockouts, riots, war, breakdowns, priorities or embargoes, accidents, civil or military authority, shortages of labor, delay in suppliers (or supplies) of material, difficulty in obtaining raw material, and any other cause beyond seller's reasonable control. Delay in delivery for any of the aforementioned causes shall proportionately extend the time of delivery hereunder. Seller shall be compensated for any and all extra costs and expenses occasioned by delays attributable to the purchaser(s).

ONE YEAR LIMITED WARRANTY:

Elecor Mfg. will repair or replace, at its expense and at its option, any Elecor Mfg. product or accessory which in normal use has proven to be defective in workmanship or material, provided that the customer notifies his supplying distributor of the alleged defect within one year from the date of delivery. If requested by Elecor Mfg., customer must provide reasonable opportunity to verify the defect by inspection. Elecor Mfg. will not be responsible for any asserted defect which has resulted from misuse, abuse, repair or alteration. Under no circumstances will Elecor Mfg. be liable for incidental or consequential damages resulting from defective products. This warranty is Elecor Mfg.'s sole warranty and sets forth the customer's exclusive remedy with respect to defective products; all other warranties, expressed or implied, whether of merchantability, fitness for purpose, or otherwise, are expressly disclaimed by Elecor Mfg.

RETURNED GOODS:

Elecor Mfg. agrees to accept from its distributor's stock only the return of products for merchandise credit subject to the following terms and conditions:

1. All requests for return authorizations must be submitted through your Elecor Mfg. Representative.
2. Material to be returned must be in original standard quantity cartons. Special orders, used, or damaged items will not be accepted. Unacceptable material will be destroyed and will not qualify for credit.
3. Returns will not be accepted unless accompanied by an Elecor Mfg. "Return Material Authorization" (RMA).
4. Minimum value of returns must not be less than \$100.00 Dist. Net Cost, after restocking charge, if applicable.
5. Credit will not be issued for items not listed on the RMA.
6. Within 60 days of issuance, all returns must be shipped freight prepaid, unless otherwise instructed, to the Elecor Mfg. warehouse specified on the RMA.
7. Credit will be given only for those products authorized on the RMA. Any non-authorized material will be scrapped or returned to distributor, freight collect, at the discretion of Elecor Mfg.
8. A merchandise credit will be issued at the prices reflected on the original invoice.
9. Deductions for returned material are not allowed. A credit memo will be issued after material has been received and inspected by our warehouse.
10. A 20% handling/restocking will be charged on returned material not related to an Elecor Mfg. error.

CONTACT: ELECOR Mfg. LLC

13 Wood Street West Haven, CT 06516
1.888.466.8600 Fax: 203.937.3028
info@elecorfittings.com



**CONTRACTOR
PRO-GRADE™**

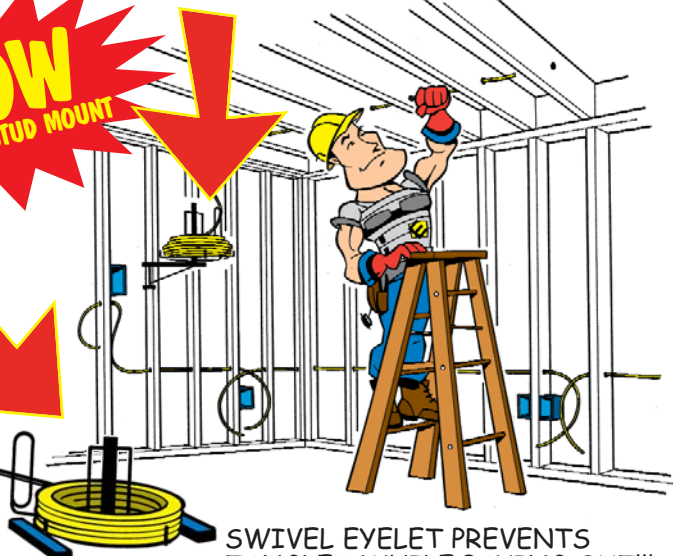
Elecor presents...

THE ADVENTURES OF ELECORMAN™

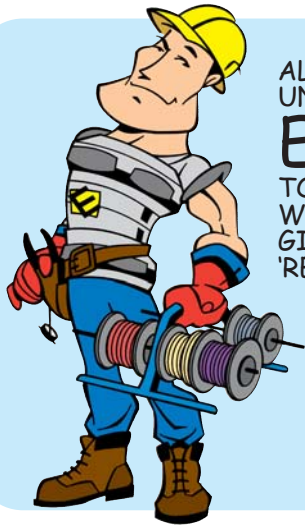
THIS CABLE DISPENSER ...
IS TWO ...
TWO...
TWO...
ITEMS
IN ONE



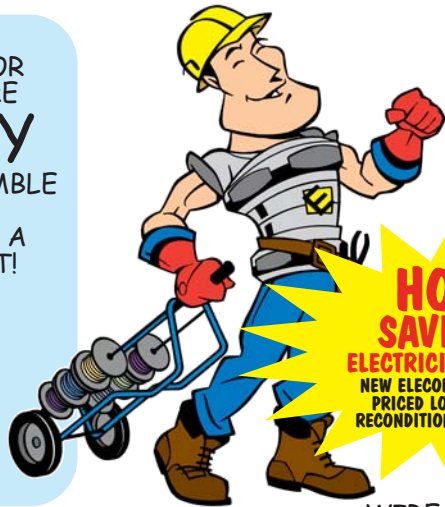
WOW
FLOOR & STUD MOUNT



SWIVEL EYELET PREVENTS
TANGLES WHILE PAYING OUT!!!



ALL ELECOR
UNITS ARE
EASY
TO ASSEMBLE
WHICH
GIVES ME A
'REEL' LIFT!

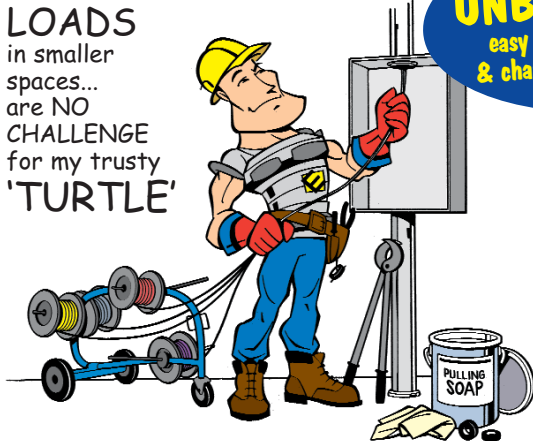


**HOLY
SAVINGS**
ELECTRICIAN-MAN!!!
NEW ELECOR UNITS ARE
PRICED LOWER THAN
RECONDITIONED MODELS!



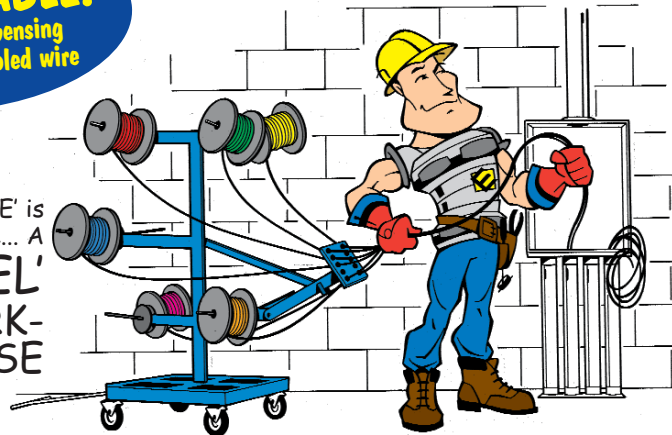
WIRE HANDLING CARTS
FOR SMALLER AND
MEDIUM LOADS

LARGER
LOADS
in smaller
spaces...
are NO
CHALLENGE
for my trusty
'TURTLE'



UNBELIEVABLE!
easy loading, dispensing
& changing of spooled wire

This 'TREE' is
like me... A
'REEL'
WORK-
HORSE



WITH ELECOR AT HIS SIDE, NO JOB IS TOO TOUGH FOR ELECORMAN!!!!



Wire Handling Table of Contents

PAGE
5



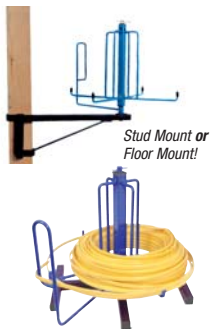
Easy Lift Hand Caddy		
Catalog No.	MH8010	
Weight	6 lbs.	
Product Size	22.75" (L) 14" (W) 11" (H)	
Carton Qty.	1	
Carton Size	23" (L) 9.625" (W) 4" (H)	
Master Qty.	4	
Master Size	23.50" (L) 16.375" (W) 10.75" (H)	
Maximum Capacity	Qty. of spools	Spool dimensions
	8	7" diameter x 5" wide
	4	7" diameter x 6-10" wide

PAGE
8



One Hand Wire Handling Cart		
Catalog No.	MH8210	
Weight	21 lbs.	
Product Size	44.25" (L) 16" (W) 17.50" (H)	
Carton Qty.	1	
Carton Size	46" (L) 12.25" (W) 3.25" (H)	
Master Qty.	2	
Master Size	46.50" (L) 12.625" (W) 7.50" (H)	
Maximum Capacity	Qty. of spools	Spool dimensions
	12	7" diameter x 5" wide
	6	7" diameter x 6-10" wide

PAGE
6



Floor or Stud Mount Cable Dispenser		
Catalog No.	MH8110	
Weight	13.60 lbs.	
Product Size	19.50" (L) 16.50" (W) 16" (H)	
Carton Qty.	1	
Carton Size	20.25" (L) 17" (W) 4" (H)	
Master Qty.	3	
Master Size	20.50" (L) 17.50" (W) 13.50" (H)	
Maximum Capacity	Coil dimensions	
	Inside	5.50" min. inside coil dia.
	Outside	17" max. outside coil dia.
	Max. Weight	50 lbs. – Add MH8120 basket to double capacity to 100 lbs.

PAGE
9



Multi-Purpose Wire Cart		
Catalog No.	MH8220	
Weight	58 lbs.	
Product Size	25" (L) 28" (W) 55" (H)	
Carton Qty.	1	
Carton Size	50.75" (L) 18.375" (W) 6.125" (H)	
Master Qty.	No master	
Master Size	No master	
Maximum Capacity	Qty. of spools	Spool dimensions
	6	2500' – up to 16" diameter
	15	500' – 7" diameter x 5" wide

PAGE
7



Cable Dispenser Add On Kit		
Catalog No.	MH8210	
Weight	13.60 lbs.	
Product Size	19.50" (L) 16.50" (W) 16" (H)	
Carton Qty.	1	
Carton Size	20.25" (L) 17" (W) 4" (H)	
Master Qty.	3	
Master Size	20.50" (L) 17.50" (W) 13.50" (H)	
Maximum Capacity	Coil dimensions	
	Inside	5.50" min. inside coil dia.
	Outside	17" max. outside coil dia.
	Max. Weight	50 lbs. – as a separate unit.
	Max. Weight	Mounted on MH8110 cable dispenser 50 lbs., total 100 lbs.

PAGE
10



6 Reel Wire Dispenser 'Turtle' Style		
Catalog No.	MH8310	
Weight	80 lbs.	
Product Size	44" (L) 29" (W) 33" (H)	
Carton Qty.	1	
Carton Size	42" (L) 26.50" (W) 8.25" (H)	
Master Qty.	No master	
Master Size	No master	
Maximum Capacity	Qty. of spools	Spool dimensions
	6	2500' – up to 18" diameter

PAGE
11



10 Reel Wire Dispenser 'Tree' Style		
Catalog No.	MH8420	
Weight	183 lbs.	
Product Size	50" (L) 32" (W) 57.5" (H)	
Carton Qty.	1 (components shipped in 2 cartons)	
Ctn. No. 1 Size	34" (L) 32" (W) 8.625" (H)	
Ctn. No. 2 Size	51" (L) 32.50" (W) 7.75" (H)	
Master Qty.	No master	
Master Size	No master	
Maximum Capacity	Qty. of spools	Spool dimensions
	10	2500' – up to 18" diameter

Cross Reference

Elecor	Greenlee	Gardner Bender
MH8010	9502	WSP-100E
MH8210	N/A	N/A
MH8110	9528 + 9525F	N/A
MH8120	9529F	N/A
MH8220	911	E-255
MH8310	909	E-250
MH8420	910	WCM-10

Comparisons relate to function only. Items may not be identical.
Elecor does not assume responsibility for errors.

Patent
Pending

Easy Lift Hand Caddy

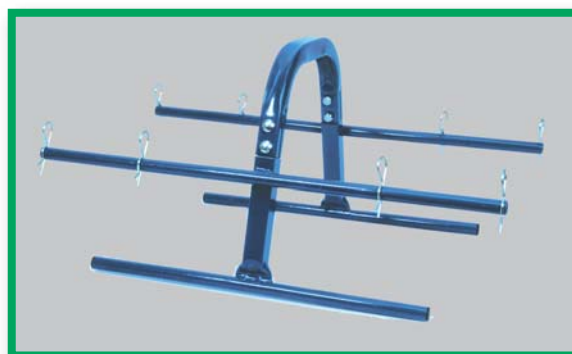
Convenient one hand portability

Catalog No. **MH8010**

- All steel construction
- Premium powder coated finish
- Easy loading, dispensing and changing of spooled wire
- Base keeps loads stable
- Easy assembly

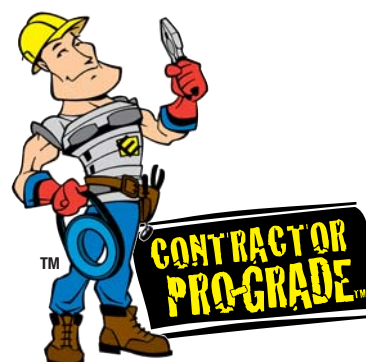


Catalog No.	MH8010
UPC No.	8 70263 00424 0
Weight	6 lbs.
Product Size	22.75" (L) 14" (W) 11" (H)
Carton Qty.	1
Carton Size	23" (L) 9.625" (W) 4" (H)
Master Qty.	4
Master Size	23.50" (L) 16.375" (W) 10.75" (H)



Capacity

Qty. of spools	Spool dimensions
8	7" diameter x 5" wide
4	7" diameter x 6"-10" wide



Hand Caddy



Patent
Pending



Floor *or* Stud Mount Cable Dispenser

Versatility of two items in one

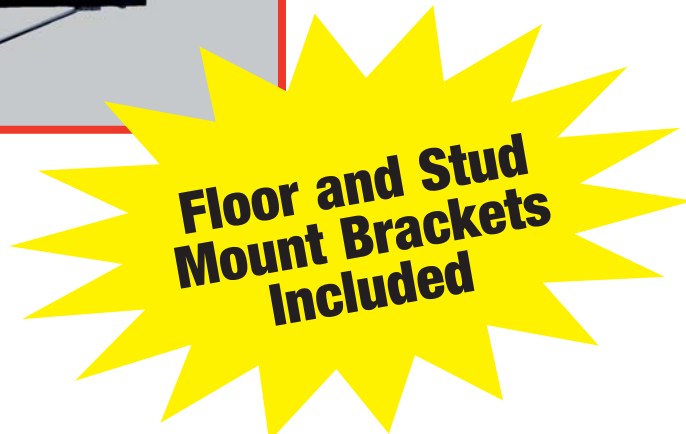
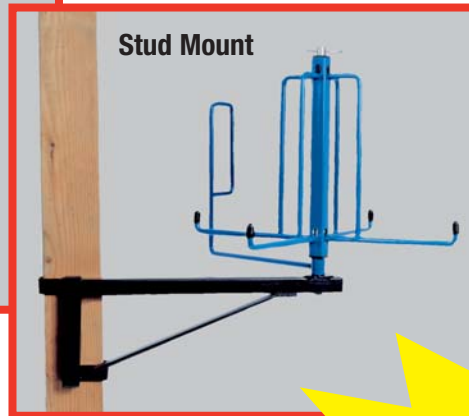
Catalog No. **MH8110**

- All steel construction
- Premium powder coated finish
- Easy loading, dispensing and changing of armored cable (BX/MC) or NM-B
- Swivel eyelet prevents tangles while paying out
- Wide base for stability
- Easy assembly, no tools required

Cable Dispenser



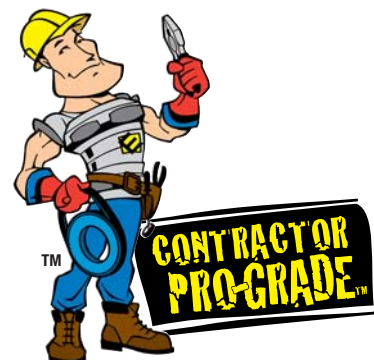
or



Catalog No.	MH8110
UPC No.	8 70263 00426 4
Weight	13.60 lbs.
Product Size	19.50" (L) 16.50" (W) 16" (H)
Carton Qty.	1
Carton Size	20.25" (L) 17" (W) 4" (H)
Master Qty.	3
Master Size	20.50" (L) 17.50" (W) 13.50" (H)

Capacity

Coil dimensions	
Inside	5.50" min. inside coil dia.
Outside	17" max. outside coil dia.
Max. Weight	50 lbs (Add MH8120 basket to double capacity to 100 lbs)



Patent Pending

Cable Dispenser Add On Kit

Mounts to cable dispenser for extra capacity

Catalog No. **MH8120**

- All steel construction
- Premium powder coated finish
- Easy loading, dispensing and changing of armored cable (BX/MC) or NM-B
- Swivel eyelet prevents tangles while paying out
- Easy assembly, no tools required



Add On Kit Mounted to Cable Dispenser on Floor Bracket

Floor Mount

or



Add On Kit Mounted to Cable Dispenser on Stud Bracket

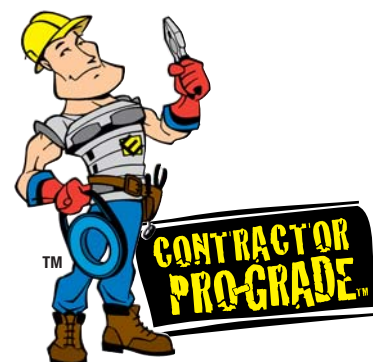
Stud Mount

Catalog No.	MH8120
UPC No.	8 70263 00430 1
Weight	7.2 lbs.
Product Size	19.50" (L) 16.50" (W) 16" (H)
Carton Qty.	1
Carton Size	20.3125" (L) 11" (W) 2.6875" (H)
Master Qty.	4
Master Size	21.00" (L) 11.50" (W) 12.375" (H)

**Mounts to
Cable Dispenser
MH8110
(sold separately)**

Capacity

Capacity / Coil dimensions	
Inside	5.50" min. inside coil dia.
Outside	17" max. outside coil dia.
Max. Weight (as separate unit)	50 lbs.
Max. Weight (mounted on MH8110 cable dispenser)	50 lbs. ea, total 100 lbs.



Cable Dispenser Add On Kit



Patent Pending

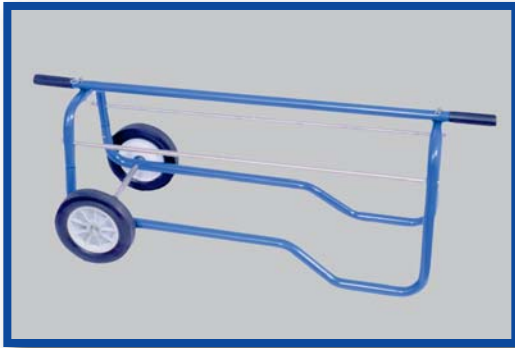


**One Hand
Wire Handling Cart**
Easy pulling of smaller loads

Catalog No. **MH8210**

- All steel construction
- Premium powder coated finish
- Easy loading, dispensing and changing of spooled wire
- 8" heavy duty wheels
- Zinc plated reel axles with spring clip retainers
- Easy assembly

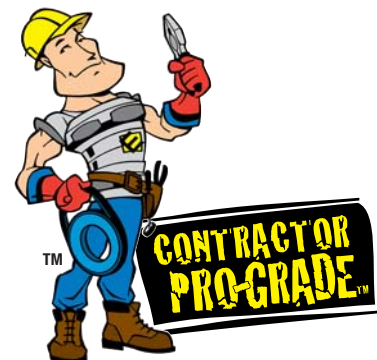
Wire Handling Cart



Catalog No.	MH8210
UPC No.	8 70263 00425 7
Weight	21 lbs.
Product Size	44.25" (L) 16" (W) 17.50" (H)
Carton Qty.	1
Carton Size	46" (L) 12.25" (W) 3.25" (H)
Master Qty.	2
Master Size	46.50" (L) 12.625" (W) 7.50" (H)

Capacity

Qty. of spools	Spool dimensions
12	7" diameter x 5" wide
6	7" diameter x 6"-10" wide



Patent
Pending

Multi-Purpose Wire Cart

Dolly type mobility for medium loads

Catalog No. **MH8220**

- All steel construction
- Premium powder coated finish
- Easy loading, dispensing and changing of spooled wire
- Fixed wire guide on handle
- 8" heavy duty wheels with adjustable axle position
- Use vertically or horizontally
- Zinc plated reel axles with spring clip retainers
- Fits through a 28" opening
- Heavy duty
- Easy assembly



Catalog No.	MH8220
UPC No.	8 70263 00427 1
Weight	58 lbs.
Product Size	25" (L) 28" (W) 55" (H)
Carton Qty.	1
Carton Size	50.75" (L) 18.375" (W) 6.125" (H)
Master Qty.	No master
Master Size	No master

Capacity

Qty. of spools	Spool dimensions
6	2500' – up to 16" diameter
15	500' – 7" diameter x 5" wide



Multi-Purpose Wire Cart



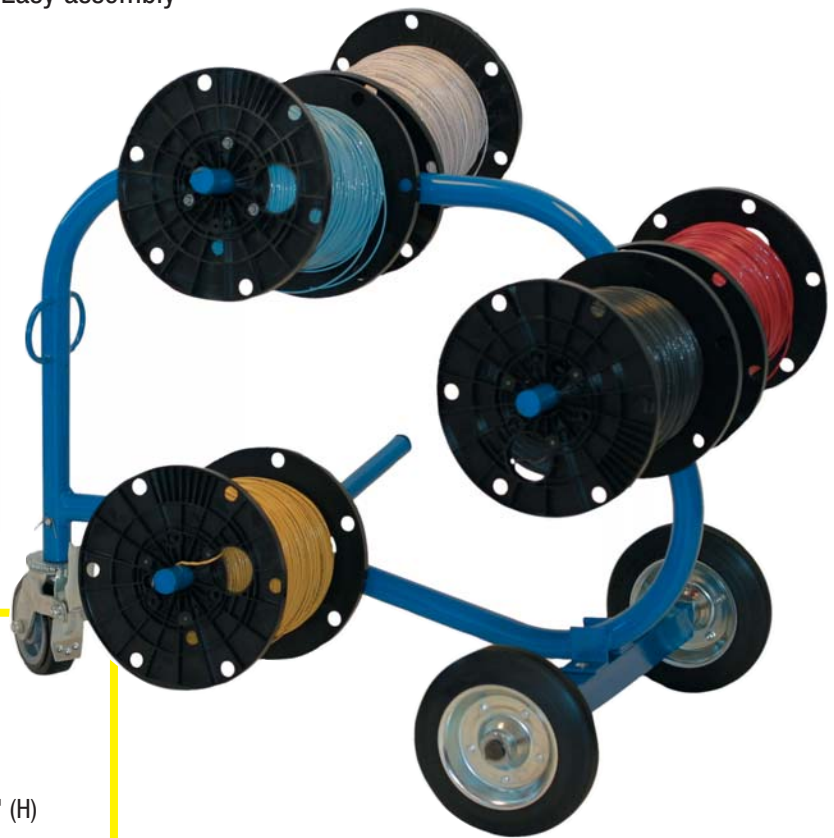
Patent
Pending



**'Turtle' Style
6 Reel Wire Dispenser**
Larger loads in smaller spaces

Catalog No. MH8310

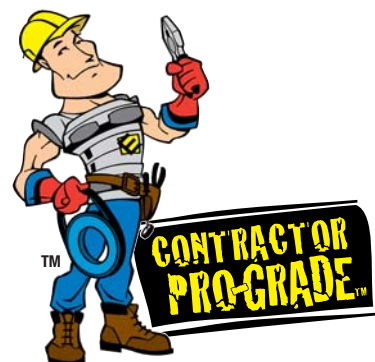
- All steel construction
- Premium powder coated finish
- Easy loading, dispensing and changing of spooled wire
- Fixed wire guide on frame
- Two fixed wheels, one locking wheel for stability
- Angled spindles keep reels in place during use
- Fits through a 30" opening
- Heavy duty
- Easy assembly



Catalog No.	MH8310
UPC No.	8 70263 00428 8
Weight	80 lbs.
Product Size	44" (L) 29" (W) 33" (H)
Carton Qty.	1
Carton Size	42" (L) 26.50" (W) 8.25" (H)
Master Qty.	No master
Master Size	No master

Capacity

Qty. of spools	Spool dimensions
6	2500' – up to 18" diameter



Patent
Pending

'Tree' Style 10 Reel Wire Dispenser

A "reel" work horse for larger loads

Catalog No. **MH8420**

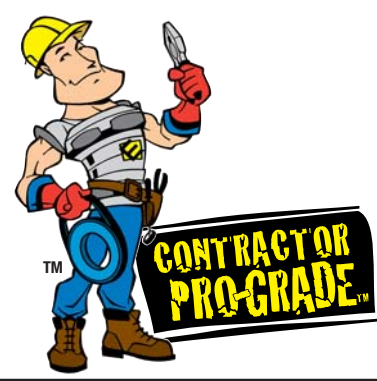
- All steel construction
- Premium powder coated finish
- Easy loading, dispensing and changing of spooled wire
- Adjustable wire guide
- Two fixed and two swivel locking casters for stability
- Angled spindles keep spools in place during use
- 360° rotating reel frame
- Fits through a 36" door opening
- Heavy duty
- Easy assembly



Catalog No.	MH8420
UPC No.	8 70263 00429 5
Weight	190 lbs.
Product Size	50" (L) 32" (W) 57.5" (H)
Carton Qty.	1 (components shipped in 2 cartons)
Carton No. 1 Size	34" (L) 32" (W) 8.625" (H)
Carton No. 2 Size	51" (L) 32.50" (W) 7.75" (H)
Master Qty.	No master
Master Size	

Capacity

Qty. of spools	Spool dimensions
10	2500' – up to 18" diameter



10 Reel Wire Dispenser

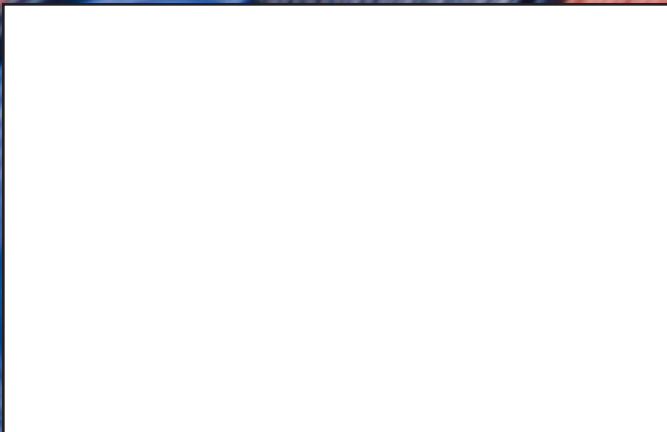
We appreciate your interest in Elecor and will strive to earn your trust everyday. We know you have many manufacturers to choose from and that our product and performance must be head and shoulders above the rest to maintain your confidence and your business. We promise that our dedication and hard work will make your job easier.

*Sincerely,
The Elecor Team*

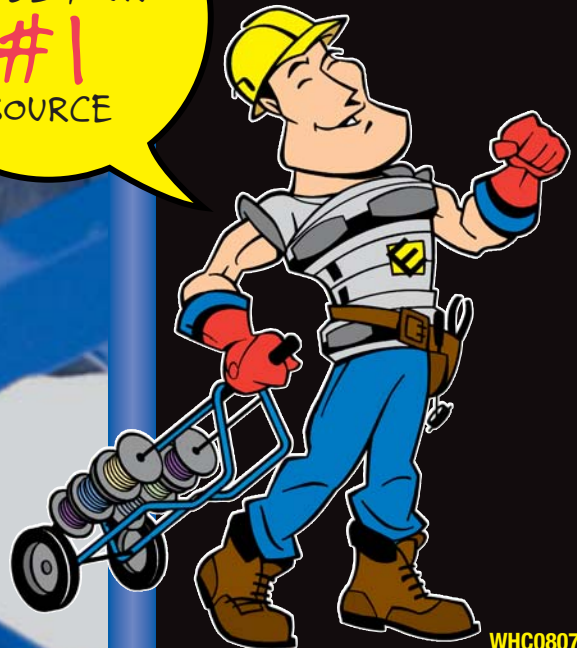
Elecor Mfg. LLC
13 Wood St.
West Haven, CT
06516

www.elecorfittings.com
toll free: 888.466.8600
fax: 203.937.3028

© 2007 Elecor. All rights reserved



WE'RE PULLING
TO BE YOUR
#1
SOURCE



WHC0807*